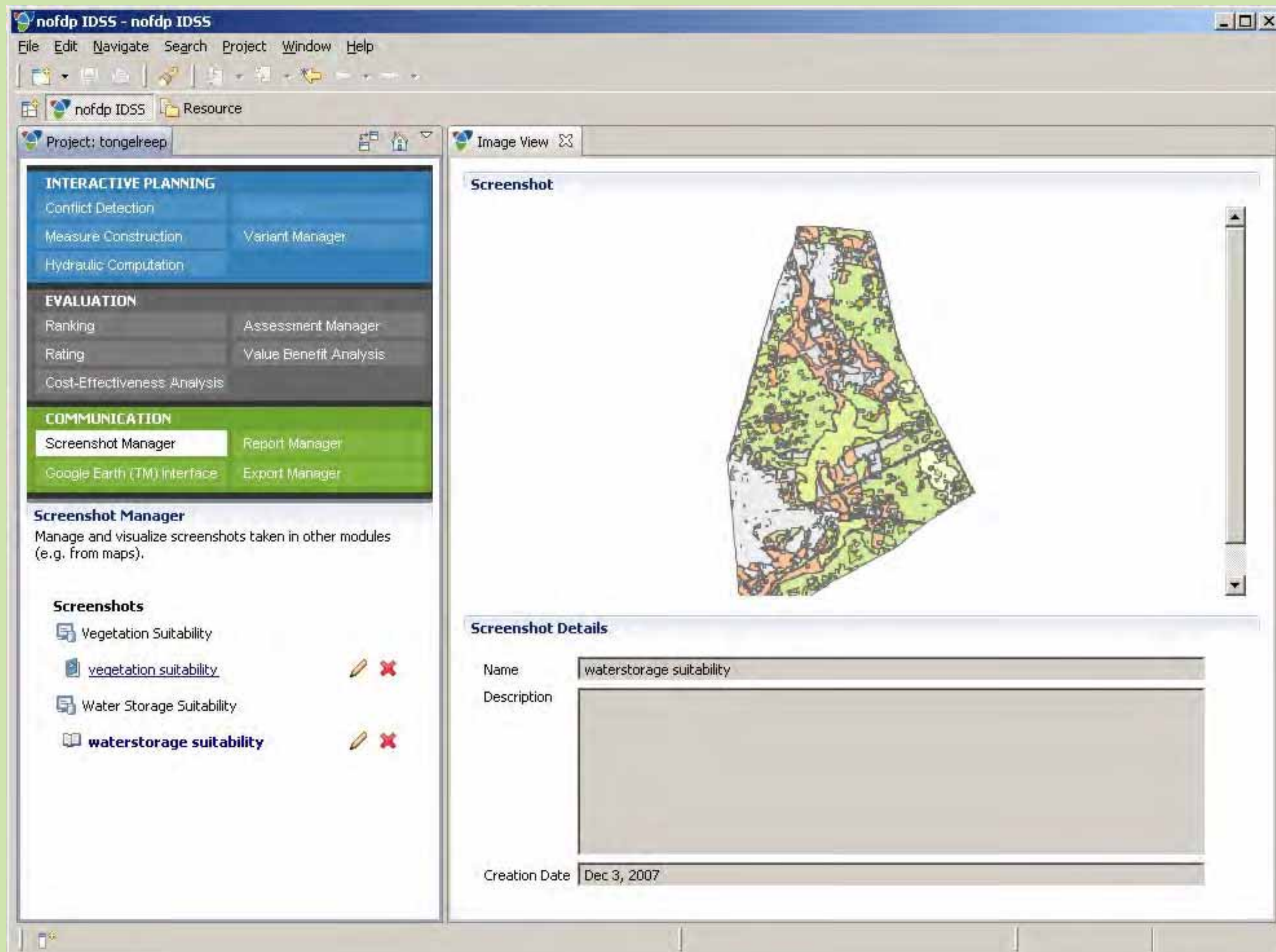


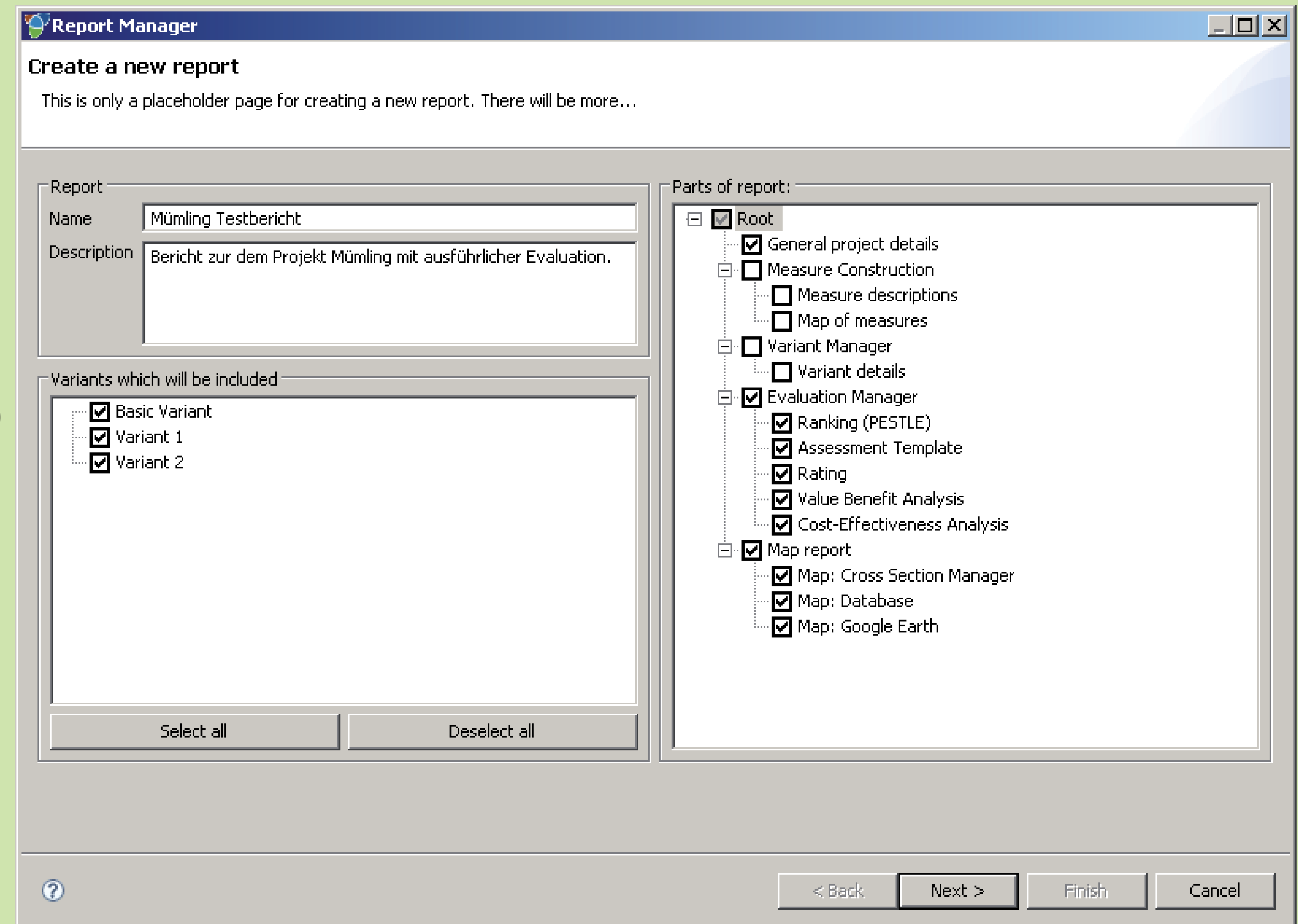
nofdp IDSS - modules of the section "Communication"

Screenshot Manager



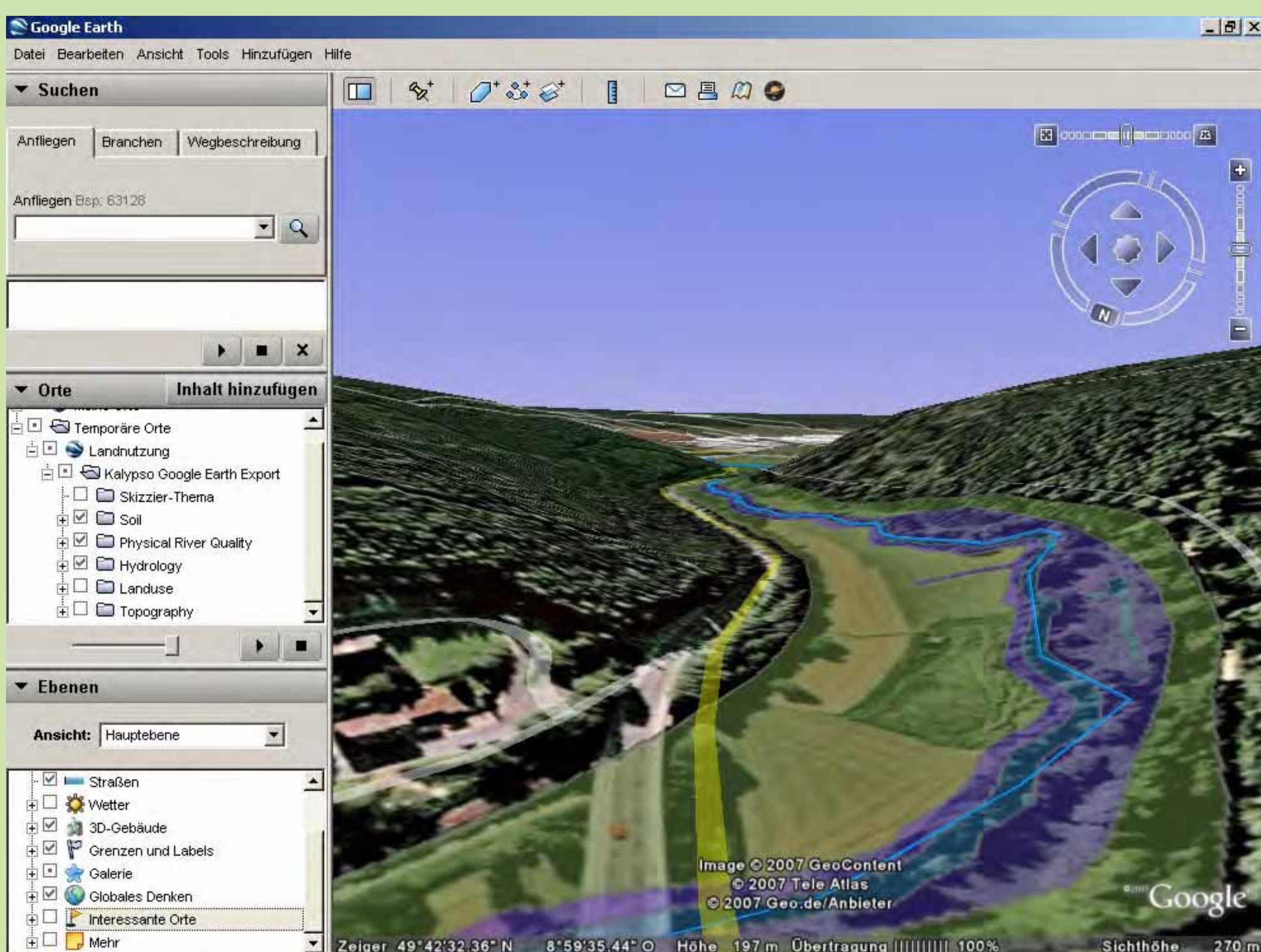
This module is assigned to the administration of screenshots (e.g. maps) being produced during the workflow of a specific project. This functionality serves for feeding the report manager.

Report Manager



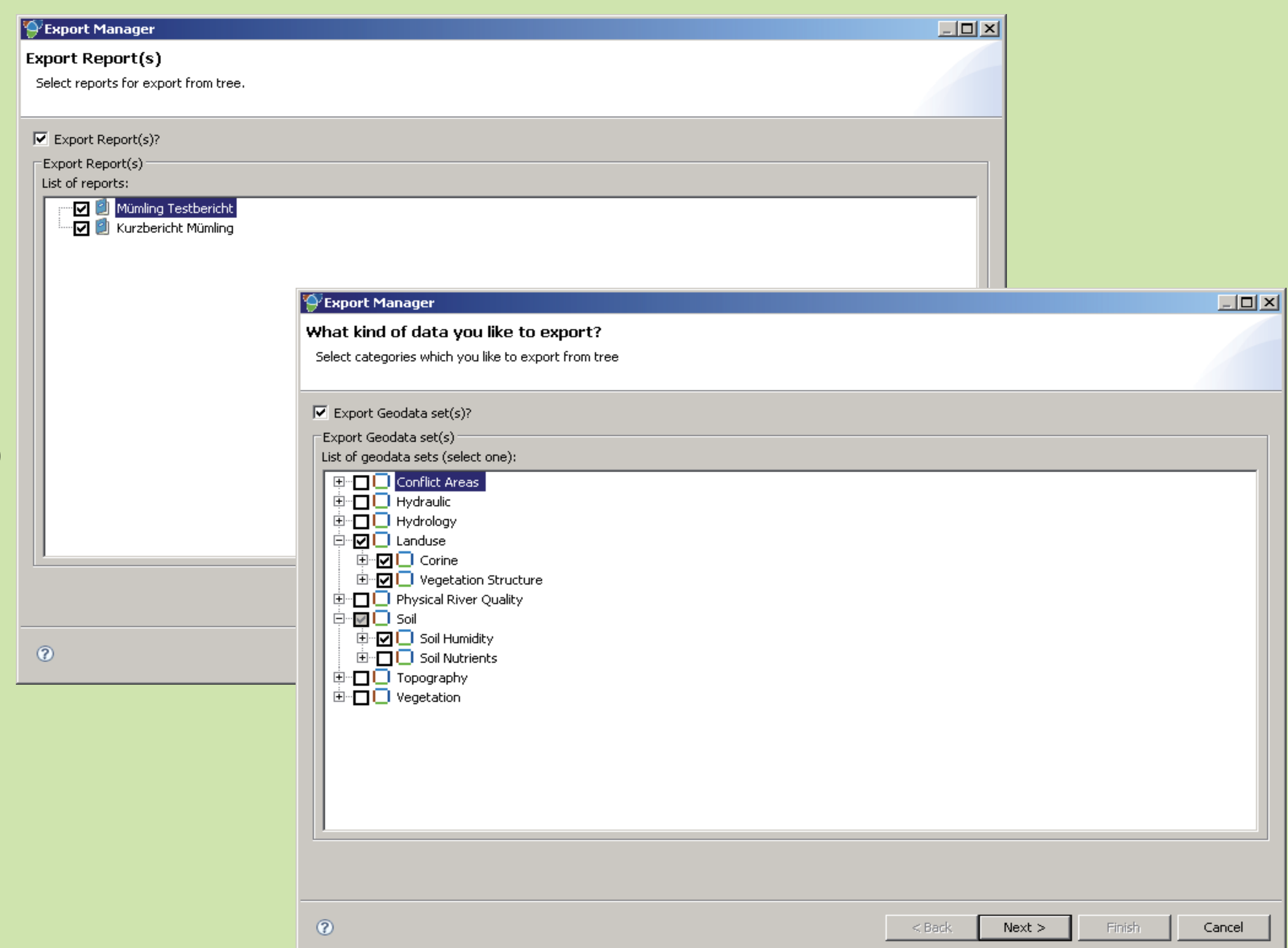
This module allows to administer all input and output data as well as all steps of workflow being then published in a pre-structured report. This report can be exported as processible text file or as PDF-file.

Google Earth Interface



Processed geodata due to the use of the IDSS (e.g. constructional measures, spatial results) can easily be uploaded and displayed in the Google Earth (TM) environment.

Export Manager



This module offers the possibility to export project related data of various kind as well as project reports. This enables further use of IDSS-processed-data for other user purposes.